



PAINTING HOLIDAYS & ART COURSES

AT

CLOS

MIRABEL

*Jurançon, Pau - SW France  
Pyrénées Atlantiques*





## THE DOMAINE

Clos Mirabel is a beautiful fifteen-acre estate between coast and mountains. Its 18th century Manor House is set in private parkland amidst the gentle hills of Jurançon with magnificent uninterrupted views out over vineyards to the Pyrénées.

A haven of peace, ever changing light and tranquillity, it is the perfect location for painting holidays.





## THE MANOR

A picturesque 18th century Manor House with south facing terrace overlooking the Clos Mirabel vineyard to the Pyrénées. The Manor House retains its old world charm and offers two large salons and a dining room to relax and share time together.



## THE GROUNDS AND POOL

Everyone can enjoy six acres of parkland at their leisure, relax in the shade of our oak trees and admire the magnificent uninterrupted views of the entire chain of the Pyrénées Atlantiques.

The large mosaic pool, partly heated by solar panels, is available to all guests from mid-May to mid-October.





## STUDIO SPACE

Located on the first floor of the Winery, this studio space was designed by our Italian architect. It offers a spacious open plan layout of 55 m<sup>2</sup> ideal for small groups of up to 15. The Loft Studio, full of natural light, looks out on to the Manor House and its open courtyard.

The studio is available at all times during your stay.



## THE ROOMS

All our bedrooms have been carefully renovated and skilfully decorated. They are equipped with WIFI and air conditioning. We can offer single or double occupancy in all bedrooms.





## FOOD & DRINK

At Clos Mirabel, food is one of our passions. Everything is homemade with great attention to detail and when possible with products from our own permaculture garden. We serve selected wines and beers from local producers. We can cater for special diets upon request.





## A DAY OUT PAINTING IN THE PYRENEES

The Ossau Valley offers stunning views and perspectives as far as Laruns and the Pic du Midi d'Ossau. The picturesque village of Castet, surmounted by its beautiful little church and cemetery, sits overlooking the valley and the lake. From this vantage point, the open view is unique.



## OUT & ABOUT

Clos Mirabel is located only 12 mins drive from central Pau and 5 mins from the local village of Jurançon. The National Pyrénéen park is within 40 mins drive. Biarritz and the Atlantic coast are less than an hour away.





## RATES

- From 995 to 1595 euros per person, per week, based on twin accommodation and room type.

### INCLUDED

- All meals, prepared with fresh and local produce.
- All morning and afternoon breaks (tea & coffee, fruit juices and cakes)
- Complementary drinks: apéritifs, beer, wines of SW France, Aragon & Navarre with evening meals.

### NOT INCLUDED

- Transfers from train station and airports. This can be arranged upon request.
- Travel costs and travel insurance are not included.
- Tuition fees are paid directly to the tutor. Rates vary.

Non painting guests are most welcome.



### THE MASTER BEDROOM

Deluxe double bedroom with en suite bathroom and air conditioning on the first floor of the 18th century Manor House.

Access to a large south facing terrace overlooking the vineyards and gardens.

Outstanding views of the Pyrénées.

Twin or Queen size bed 160 cm.

All-inclusive Price (apart from tuition fees):

Single: 1595€ single occupancy

Sharing: 1295€ per person sharing



### THE BLUE BEDROOM

Deluxe double bedroom with en suite bathroom and air conditioning on the first floor of the 18th century Manor House.

Access to a large south facing terrace overlooking the vineyards and gardens.

Outstanding views of the Pyrénées.

Twin or Queen size bed 160 cm.

All-inclusive Price (apart from tuition fees):

Single: 1495€ single occupancy

Sharing: 1195€ per person sharing





### THE PEACH BEDROOM

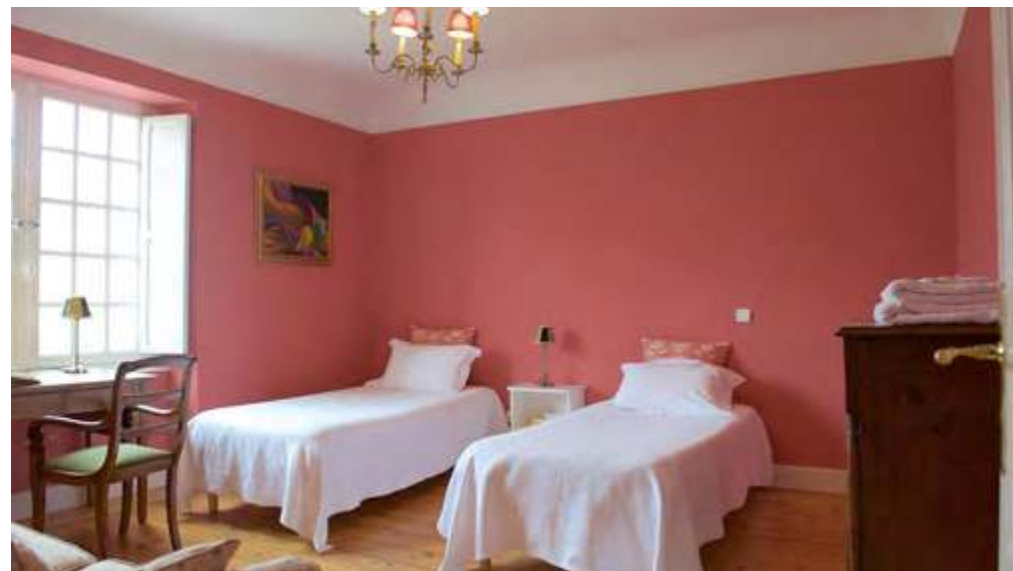
Deluxe double bedroom with en suite bathroom and air conditioning on the first floor of the 18th century Manor House, overlooking the open courtyard and winery. Access to a large south facing terrace with views over the vineyards, park and the Pyrénées.

Queen size bed 160 cm.

All-inclusive Price (apart from tuition fees):

Single: 1395€ single occupancy

Sharing: 1095€ per person



### THE PINK BEDROOM

Double bedroom with private shower room opposite the room and air conditioning on the first floor of the 18th century Manor House. View of north facing gardens. Access to a large south facing terrace overlooking the vineyards, park and the Pyrénées.

Twin or King size bed 180 cm.

All-inclusive Price (apart from tuition fees):

Single: 1295€ single occupancy

Sharing: 995€ per person



### THE YELLOW BEDROOM

Double bedroom with private shower room opposite the room and air conditioning, on the first floor of the 18th century Manor House.

View over the park. Access to a large south facing terrace overlooking the vineyards, park and the Pyrénées.

Twin or King size bed 180 cm.

All-inclusive Price (apart from tuition fees):

Single: 1295€ single occupancy

Sharing: 995€ per person sharing



### THE CAMELIA STUDIO

Double bedroom with private en suite shower room, situated on the ground floor of the winery. Light and airy. Access to a large south facing terrace overlooking the vineyards, park and the Pyrénées. North facing garden views.

Twin or King size bed 180 cm.

All-inclusive Price (apart from tuition fees):

Single: 1295€ single occupancy

Sharing: 995€ per person sharing





## THE MANOR HOUSE APARTEMENT

Sleeps up to 4 guests

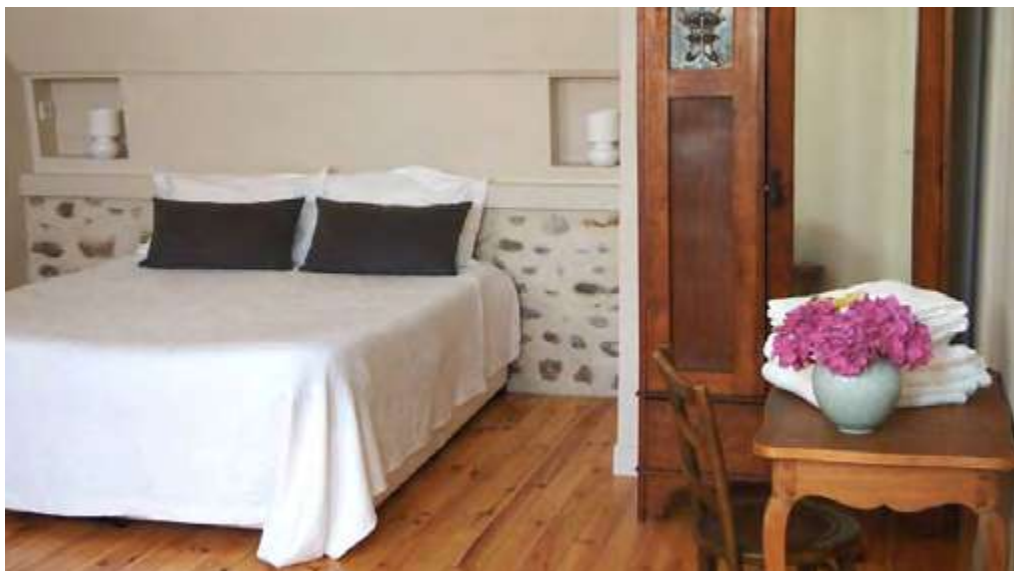
Double bedroom + Mezzanine (twin beds)  
with shower room and air conditioning in a self  
contained apartment over 3 levels in the 18th  
century Manor House.

Access to a large south facing terrace overloo-  
king the vineyards and gardens with outstan-  
ding views of the mountains.

Queen size bed 160cm  
+ twin beds or king size bed 180 cm.

All-inclusive Price (apart from tuition fees):

Double: 1395€ per person sharing  
Triple: 1195€ per person sharing  
Quadruple: 995€ per person sharing



## THE WINERY STUDIO

Sleeps up to 2 guests

Large studio with shower room, on the first level of the winery.

Access to a large south facing terrace overlooking the vineyards and gardens with outstanding views of the Pyrénées.

Queen size bed 160 cm  
or twin beds.

All-inclusive Price (apart from tuition fees):

Single: 1395€ single occupancy

Double: 1195€ per person sharing



# TERMS & CONDITIONS

To make a booking

1. Check availability directly by email: [info@closmirabel.com](mailto:info@closmirabel.com) or by telephone: +33 (0) 6 79 59 04 91.
2. If you wish to confirm a reservation this is usually done by e-mail. Clos Mirabel SARL will confirm the reservation by e-mail and request a deposit of 50%. Receipt for payment of the deposit will be sent upon deposit.
3. Balance of payment is due 12 weeks before the beginning of the course.
4. Clos Mirabel operates a strict NO SMOKING policy inside all the buildings.

Cancellation Policy

If a confirmed booking is cancelled after paying the 50% deposit, over 3 months prior to the start of the course, a cancellation fee of 25% will be made. If a confirmed booking is cancelled within 3 months of the start of the course, the total amount of the deposit will be retained.

We recommend travel insurance for all our courses.

Payment

In Euros either by credit card, cash, cheque or by bank transfer to the Clos Mirabel S.A.R.L. account, net of any bank charges and other charges including exchange rate variations.

Local tourist tax: 1€ per adult per night.

# CLOS MIRABEL

276 Avenue des Frères Barthélémy

64110, Jurançon-PAU

+33 (0)6.79.59.04.91

info@closmirabel.com

www.closmirabel.com

www.facebook.com/ClosMirabel/

www.instagram.com/closmirabel/

## Airports

Pau, Lourdes/Tarbes, Biarritz,

San Sebastian, Toulouse, Bordeaux

Train station - Pau



Clos Mirabel reserves the right to make changes to this programme.

Copyright Clos Mirabel SARL